

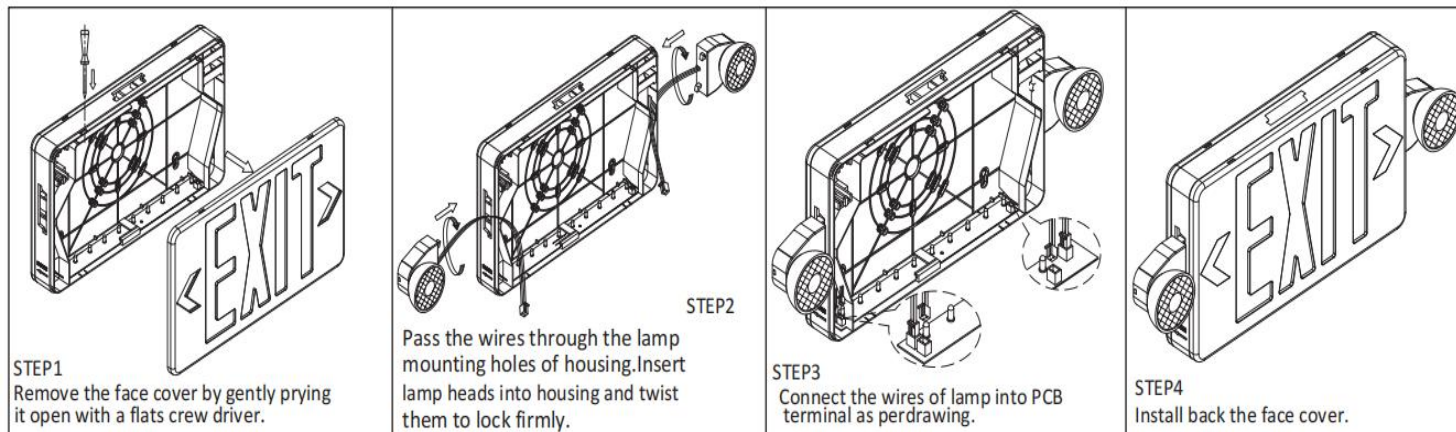
# LED EMERGENCY LIGHT



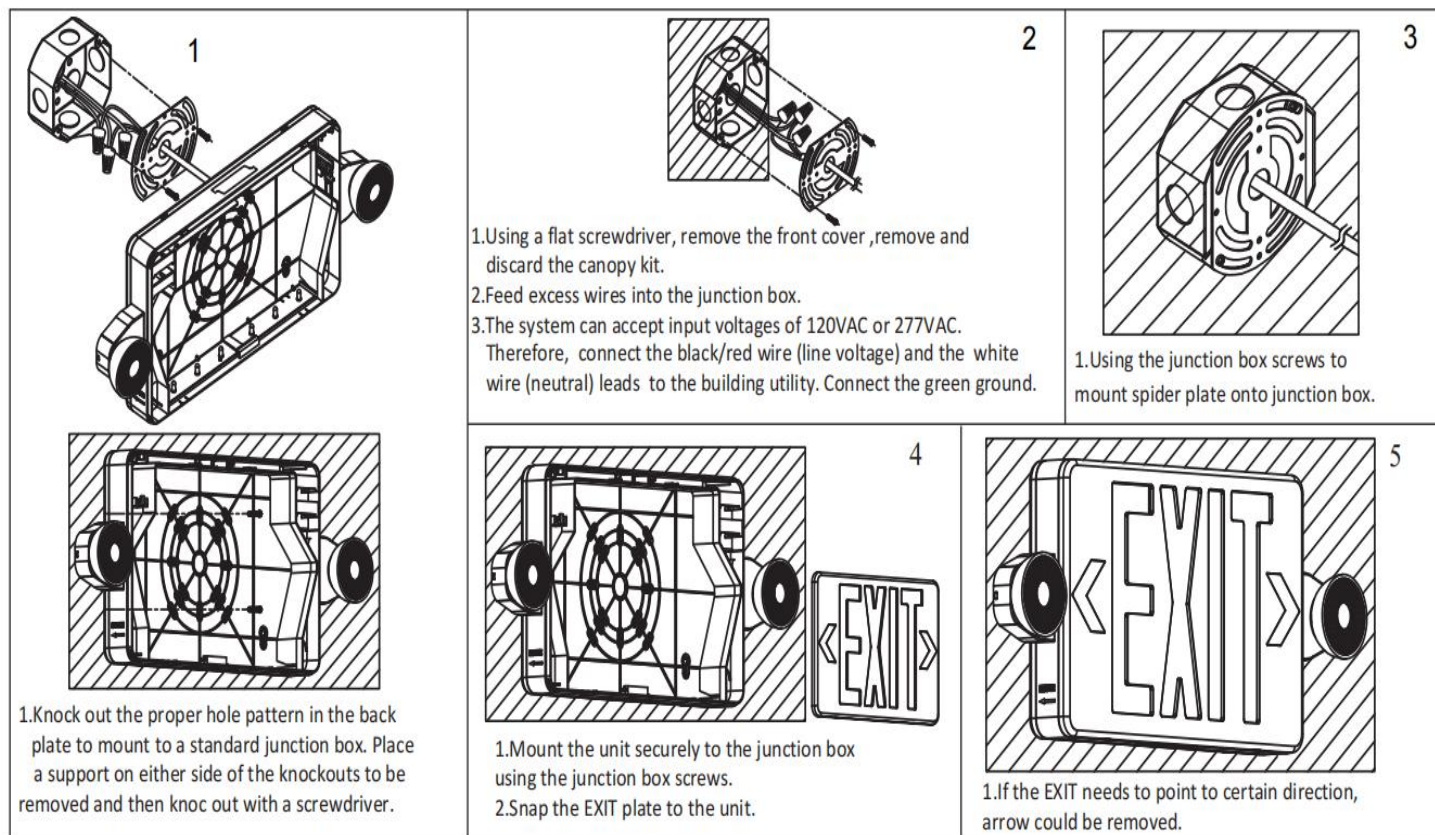
Oncall LED

## INSTALLATION INSTRUCTIONS

### ❖ Lamp heads



### ❖ Wall mount



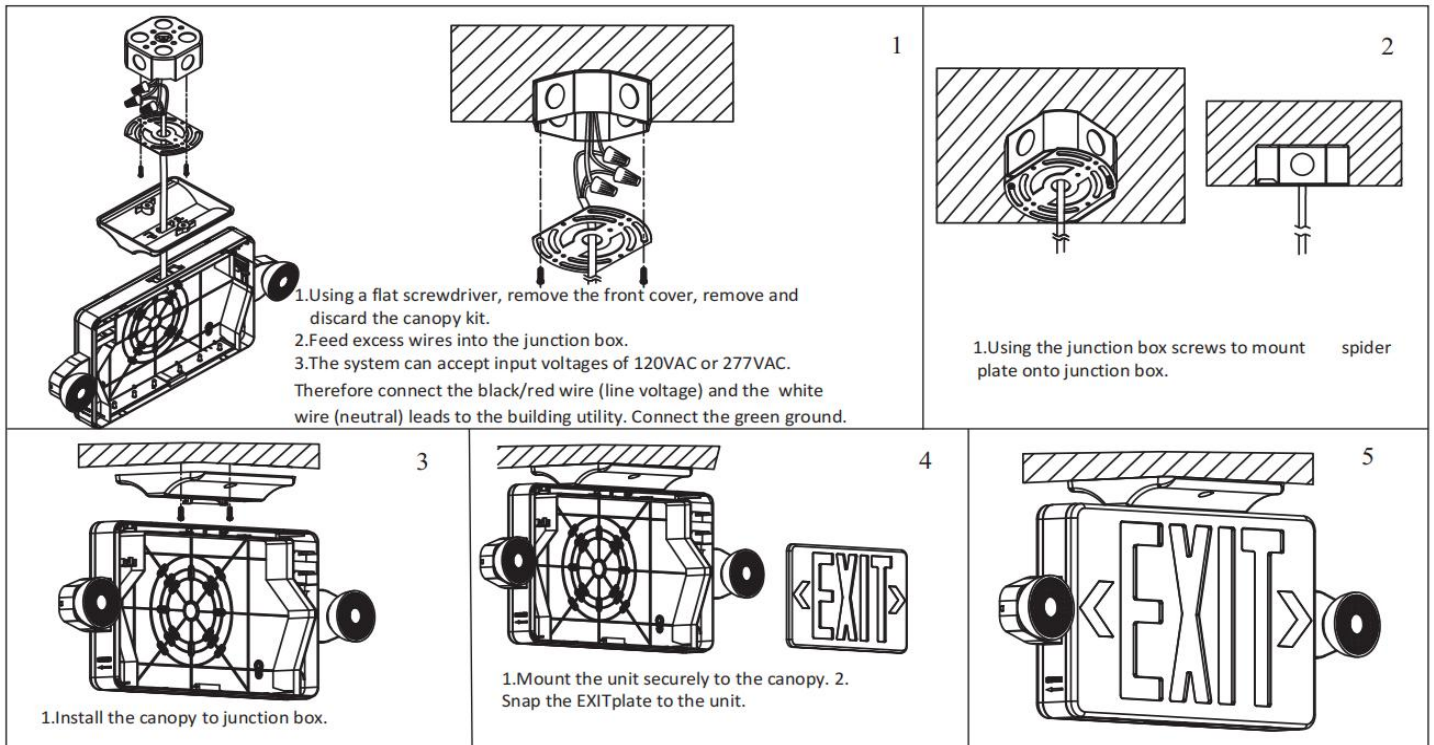
# LED EMERGENCY LIGHT



Oncall LED

## INSTALLATION INSTRUCTIONS

### ❖ Top mount



### ■ APPLICATION

