

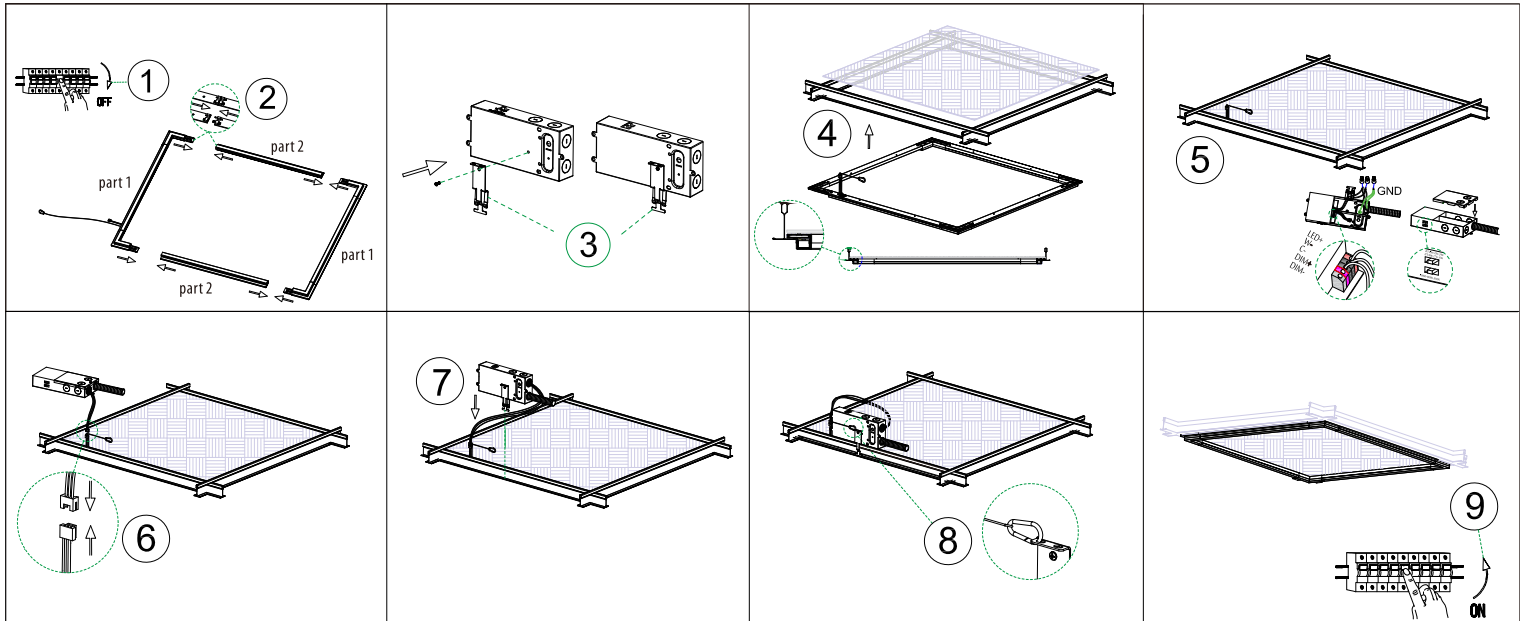
LED PANEL LIGHT



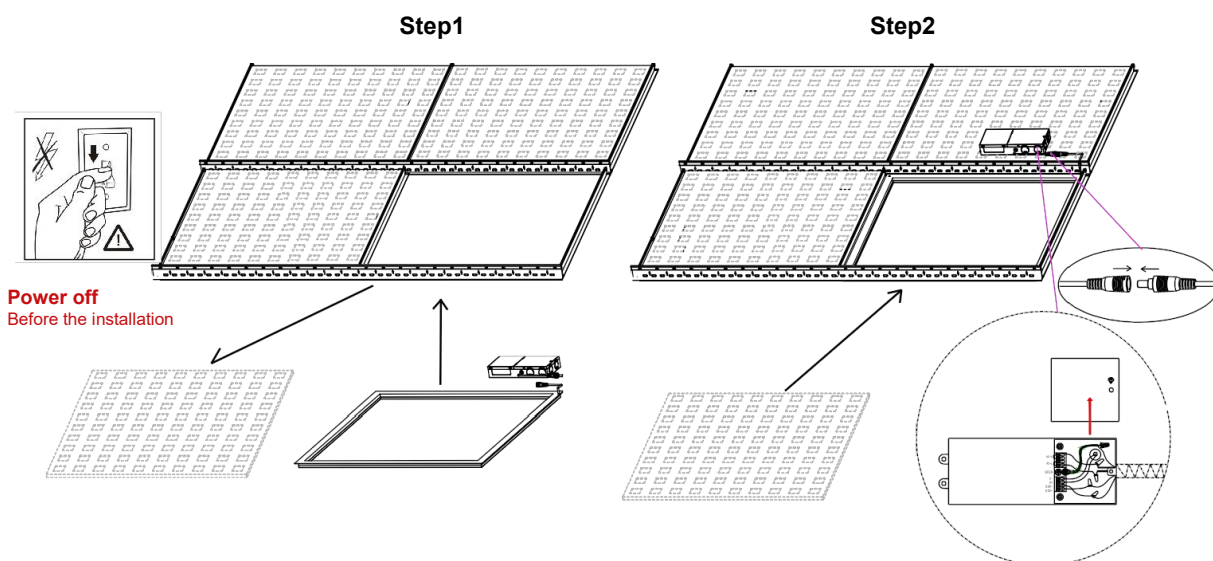
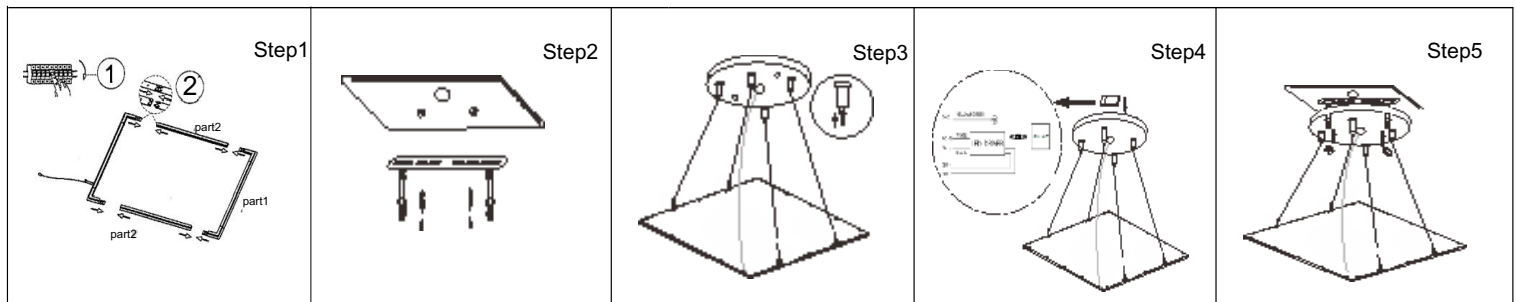
Oncall LED

INSTALLATION INSTRUCTIONS

A: Embedded installation



B: Hanging installation(Optional)



- Step 1:** Make sure of all the power is off before installing. Remove the one ceiling tile that you need to install light fixture on. Then place the light fixture on the T-bar carefully and make sure it is correctly in place and secure.
- Step 2:** Place the driver on top of the next ceiling tile. Connect the cable between the driver and the lighting fixture.
- Step 3:** Open the driver's junction box and connect the AC wire to the driver correctly (L=black & N=white).